

**Three-Year Farm to School Plan:
Vista Unified School District
2015 - 2018**

Introduction

In Spring of 2015, Vista Unified School District (VUSD) was selected through a competitive RFP process to receive technical assistance from Community Health Improvement Partners (CHIP) to create a three-year farm to school (F2S) plan for the district (see Appendix 1). The following document lays out the activities conducted, the findings of these activities, and resulting plan for growing Vista's farm-to-school program over the coming three years.

What is farm to school?

Farm to school enriches the connection communities have with fresh, healthy food and local food producers by changing food purchasing and education practices at schools and preschools.

Students gain access to healthy, local foods as well as education opportunities such as school gardens, cooking lessons and farm field trips. Farm to school empowers children and their families to make informed food choices while strengthening the local economy and contributing to vibrant communities.

Farm to school implementation differs by location but always includes one or more of the following:

- **Procurement:** Local foods are purchased, promoted and served in the cafeteria or as a snack or taste-test;
- **Education:** Students participate in education activities related to agriculture, food, health or nutrition; and
- **School gardens:** Students engage in hands-on learning through gardening.

CORE ELEMENTS OF **FARM to SCHOOL**



GET STARTED

LEARN MORE ABOUT NFSN

Mapping VUSD's Existing Farm to School Program

Prior to convening VUSD farm-to-school stakeholders, CHIP staff worked with the VUSD Project Lead to document VUSD's existing farm-to-school activities. These current activities are presented below in a table broken out by the three main components of a farm-to-school program—local foods procurement, school gardens, and nutrition education. Also included is a section for cross-category linkages.

Local Procurement	School Gardens	Nutrition Education
<ul style="list-style-type: none"> Main distributor: American Produce, source local through American, AI able to source HOTM items and give farm name and place. Buying greens from Solutions Farms <ul style="list-style-type: none"> Baby greens: 227 lbs/wk Romaine: 250 lbs/wk @ peak Middle & High schools prepare fresh entrée salad every day <u>Goal</u>: Develop and deliver culinary training for staff to increase ability to handle/prepare fresh produce in-house. 	<ul style="list-style-type: none"> All Vista elementary schools have gardens, not sure how many are planted though. Other sites may have gardens as well but there isn't a comprehensive list of active gardens in the district. 	<ul style="list-style-type: none"> Menus: Seasonal menu, changes 3 times per year. Increasing student involvement in menu development and promoting meals at school on campus. All elementary schools have full salad bars. Orientation for students with food service staff & food service etiquette. Piloting orientations with classes at Temple Heights this Fall. Conducting plate waste studies to assess impact on student selection and consumption of produce. Harvest of the Month: <ul style="list-style-type: none"> All classrooms at Foothill Oak ('13-'14) doing HOTM in classrooms All classes at Olive Elementary added this year ('14-'15) Third will be added next year at Beaumont Elementary. 150 classrooms doing HOTM throughout district (~3,700 students) <u>Goal</u>: California Thursdays. Attending training in October to bring new program to district. <u>Goal</u>: Improved signage in cafeterias to highlight foods, provide details about ingredients, and encourage students to select more fruits & veggies.
Cross Category Linkages (i.e. policies, administrative and/or community support, etc.) <ul style="list-style-type: none"> Lean and Green Kids (Barbara Gates) – Daily Scoop – brief educational messages promoting improved nutrition for better health and a better planet. Farmers Market Manager in Vista (Mark); Saturday Vista Farmers Market is right next to a Vista elementary school Vista Community Clinic FFA program at VHS (potential cross-category linkage between school gardens and nutrition education) Culinary arts program (potential cross-category linkage between school gardens and nutrition education) UC Cooperative Extension support with parent engagement by providing nutrition education classes for families Family Engagement Network Team - Some schools have employee that is a parent liaison. Strawberry festival! Partner with Chamber of Commerce to promote Strawberry Race with student discount. District's Wellness Policies outline nutrition education and foods on campus. <u>Goal</u>: Align HOTM items in the classrooms w/ items on the salad bar. 		

VUSD Farm to School Visioning Session: July 22nd, 2015

On July 22, 2015 over 30 farm-to-school stakeholders attended a VUSD farm-to-school visioning session facilitated by Community Health Improvement Partners (CHIP) and the VUSD Project Lead (see Appendix 2). The session included teachers, food service staff, curriculum developers, local farmers, farmers' market managers, marketing partners, the district's produce distributor, the district Superintendent, and more.



An interactive visioning session was conducted with those in attendance to get their input on a draft vision statement for Vista Unified School District's farm-to-school program. This will be the guiding statement that clearly defines the end goal of F2S at Vista Unified School District.



Below is the vision statement constructed based on stakeholder input. This will be VUSD's guiding statement that clearly defines the end goal of F2S at Vista Unified School District.

Vision Statement

By engaging in farm-to-school (F2S) activities, students at Vista will make healthier food choices, advance their educational and professional goals, and use F2S as a platform for engaging with the local community, environment, economy, and food system.

By grounding its farm to school program in the district's broader mission of being a model of educational excellence and innovation, Vista will be a leader in farm-to-school in Southern California and beyond.

The vision statement has been distributed to the participating stakeholders and has received positive feedback.

Identifying Commitments to VUSD's Farm-to-School Program

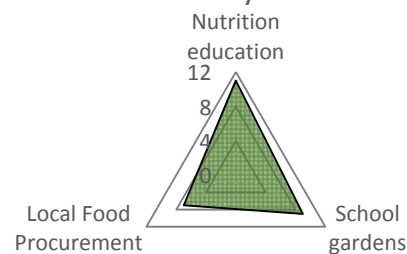
At the end of the visioning session, attendees identified the individual commitments they would be able to make to VUSD's farm-to-school activities in the coming year and beyond (see Appendix 3). CHIP collected this data, documented individual commitments, and analyzed the set of commitments for trends. The commitments were grouped into different farm-to-school activities and strategies.

Activities include the three main components of farm-to-school: Local foods procurement, school gardens, and food/nutrition education. **Strategies** include the various mechanisms that VUSD's farm-to-school efforts can be advanced in the district and broader community. Note that these categories are not fixed and were identified by CHIP staff as common themes that emerged during the analysis of commitments. These strategies include: direct education, collaboration and capacity building (internal to the district), community engagement, curriculum development, marketing/communications, policy/advocacy, and funding.

Below are tables, charts, and a brief analysis summarizing trends in VUSD stakeholders' commitments to growing farm-to-school at VUSD broken out by different activities and strategies.

F2S Activity	# of commitments
Nutrition education	11
School gardens	9
Local Food Procurement	7

Commitments by F2S Activities



F2S Strategy	# of commitments
Direct Education	20
Collaboration & Capacity building (internal)	19
Community Engagement	13
Curriculum Development	8
Marketing/communications	4
Policy/advocacy	3
Funding	2

As the tables and charts above demonstrate, there is a rough balance between different farm-to-school activities. This suggests VUSD has a base of stakeholders to draw on to create a relatively balanced farm-to-school program. In terms of strategies, VUSD has stakeholders eager to conduct direct education activities and to collaborate and build capacity within the district. Strong commitment also exists to conduct community engagement and develop farm-to-school curriculum. Areas with less (but not completely nonexistent) commitment include marketing, policy/advocacy, and fundraising.

Farm-to-School VUSD Sub-Teams

VUSD farm-to-school stakeholders have also been identified as able to provide support on the different farm-to-school activities and strategies detailed above. While not formal “sub-teams,” these loose groups will help VUSD staff call upon the right people at the right time to help advance the districts various farm-to-school efforts.

Farm to School Activities			Farm to School Strategies						
Nutrition education	School gardens	Procurement	Direct Education	Curriculum Development	Community Engagement	Collaboration & Capacity building	Marketing/communications	Funding	Policy/advocacy
Lisa Maguire	Silvia Alcantar	Amy Haessly	Silvia Alcantar	Barbara Cole Gates	Rachel Emens	Lisa Maguire	Rachel Emens	Devin Vodicka	Brock Smith
Melissa Roberts	Lisa Maguire	Lisa Bernheisel	Barbara Cole Gates	Lisa Bernheisel	Rosa Urias	Melissa Roberts	Dave Palmer	Brock Smith	Rosa Urias
Silvia Alcantar	Ana Palonio-Zerfias (VCC)	Chico Goff	Chico Goff	Amy Haessly	Kevin Gorham	Silvia Alcantar	Mark Wall		Melanie Petersen
Ana Palonio-Zerfias (VCC)	Rosa Urias	Mark Wall	Mia Piro	Kevin Gorham	Mim Michelove	Rachel Emens	Devin Vodicka		
	Kevin Gorham	Mia Piro	Rosa Urias	Mia Piro	Mark Wall	Stephanie Ross			
	Kimberly Hicks		Rachel Emens	Shan Fernandez	Ana Palonio-Zerfias (VCC)	Rosa Urias			
	Mia Piro		Stephanie Ross		Melissa Roberts	Devin Vodicka			
			Lisa Bernheisel		Silvia Alcantar	American Produce			
			Kevin Gorham		Dave Palmer	Mia Piro			
			Mark Wall		Melanie Petersen	Brock Smith			
			John Wathen		Kimberly Hicks	Shan Fernandez			
			Mim Michelove						

Farm to School Plan for VUSD

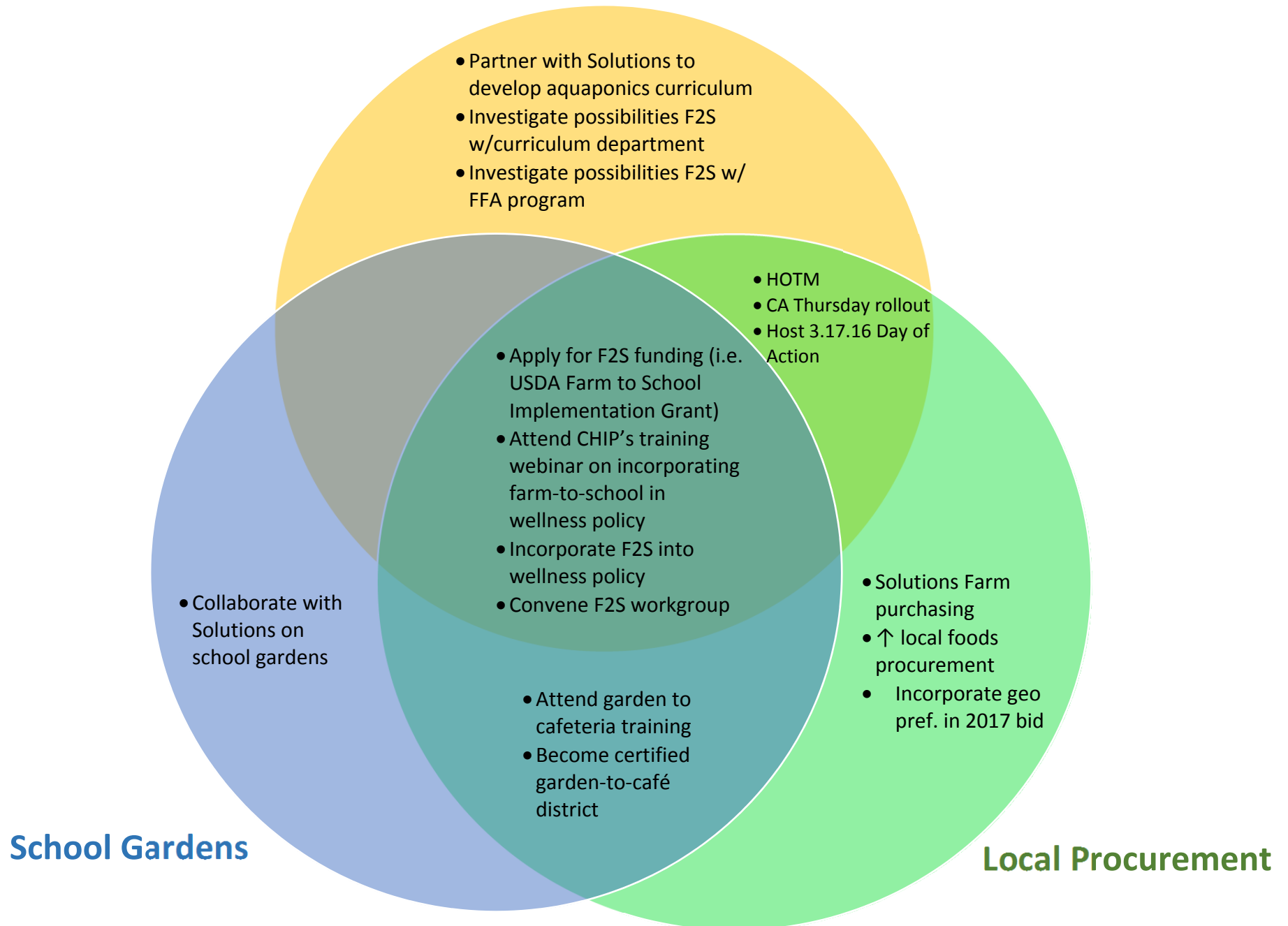
The goals below have emerged from the farm-to-school planning process as ways to strategically advance VUSD's farm-to-school program over the coming three years. The table below includes goals, timeline (Y1, Y2, Y3), and icons to show what activity category (or categories) the goal falls into and which strategies will be involved.

Goal	Timeline	F2S Activity	Strategy	Key Persons/ Departments Involved
Continue to participate in Harvest of the Month program (in the cafeteria and in the classroom)	Y1	Local Procurement, Food/Nutrition Education	Direct education	Vista Child Nutrition Services, Classroom teachers
Continue purchasing greens from Solutions Farm	Y1	Local Procurement	Collaboration & capacity-building	Vista Child Nutrition Services, Solutions
Increase local foods procurement, purchasing direct from growers if possible, focusing on procuring HOTM items from other local growers	Y1	Local Procurement	Collaboration & capacity-building	Vista Child Nutrition Services
Rollout California Thursdays (CT) program in Winter/Spring of 2016, starting by serving 1 CT meal per month	Y1	Local Procurement, Food/Nutrition Education	Direct education, communications/ marketing	Vista Child Nutrition Services
Host a CT Day of Action event on March 17, 2016	Y1	Local Procurement, Food/Nutrition Education	Direct education, community engagement	Vista Child Nutrition Services
Partner with Solutions Farm and VUSD Curriculum staff to develop an aquaponics curriculum	Y1	Food/Nutrition Education	Collaboration & capacity-building, curriculum development	Vista CNS, C&I, & Solutions Farm
Attend CHIP's 2016 training on garden to cafeteria	Y1	School Gardens, Local Procurement	Collaboration & capacity-building, policy and advocacy	Vista Child Nutrition Services

Attend CHIP's 2016 training/webinar of incorporating support for farm-to-school into VUSD's Wellness Policy	Y1	School Gardens, Local Procurement, Food/Nutrition Education	Collaboration & capacity-building, policy and advocacy	Vista CNS, C&I
Incorporate support for farm-to-school into VUSD's wellness policy	Y1	School Gardens, Local Procurement, Food/Nutrition Education	Collaboration & capacity-building, policy and advocacy, community engagement	VUSD Wellness Council
Present F2S plan to VUSD board	Y1		Collaboration & capacity-building, funding	Vista CNS, C&I
Conduct promising practice presentation to community partners/F2S Taskforce	Y1		Collaboration & capacity-building, funding	Vista CNS, C&I
Develop relationship and investigate possibilities re: farm-to-school with VUSD's Curriculum Department	Y1	Food/Nutrition Education	Collaboration & capacity-building, curriculum development	Vista CNS, C&I
Convene a farm-to-school workgroup within VUSD	Y1	School Gardens, Local Procurement, Food/Nutrition Education	Collaboration & capacity-building,	Vista CNS
Engage Solutions Farm to support and/or collaborate on building gardens at VUSD schools	Y2	School Gardens	Collaboration & capacity-building, community engagement	Vista CNS, C&I, & Solutions Farm
Become a certified garden-to-café district with County of San Diego Environmental Health Department	Y2	School Gardens, Local Procurement	Collaboration & capacity-building, policy and advocacy	Vista CNS, San Diego County Dept. Environmental Health

Conduct promising practice presentation on F2S planning and/or capacity building at regional/state conference	Y2		Collaboration & capacity-building, funding	Vista CNS, C&I
Implement appropriate Smarter Lunchrooms practices	Y2-Y3		Collaboration & capacity-building, funding	Vista CNS
Assess how Smarter Lunchroom practices could be incorporated into VUSD/WaveCrest Café's operations	Y1-Y2		Collaboration & capacity-building, funding	Vista CNS, C&I
Apply for a USDA Farm to School grant	Y2	School Gardens, Local Procurement, Food/Nutrition Education	Funding	Vista CNS, C&I
Develop relationship and investigate possibilities re: farm-to-school with VUSD's FFA Program	Y1-Y2	Food/Nutrition Education, School Gardens	Collaboration & capacity-building, curriculum development	Vista CNS, FFA program
Incorporate geographic preference in Vista's 2017-2018 bid	Y3	Local Procurement	Collaboration & capacity-building	CHIP, Vista Child Nutrition Services, Purchasing Department

Food/Nutrition Education



Appendices

Appendix 1: Vista's Request for Proposal Application

Appendix 2: Visioning session PowerPoint presentation, July 2015

Appendix 3: Copy of Visioning Session Commitment Form

Farm-to-School Technical Assistance Requests for Application (RFA)

CHIP is selecting two San Diego County school districts to receive technical assistance (TA) in the development of a 3-year farm-to-school plan. Applications must be received April 22, 2015.

See below for background, description of the technical assistance available, eligibility, selection criteria, frequently asked questions (FAQ), and application materials.

BACKGROUND

Community Health Improvement Partners – CHIP

Community Health Improvement Partners (CHIP) is a non-profit collaboration of San Diego health care systems, hospitals, community clinics, insurers, physicians, universities, community based organizations and the County of San Diego with a common vision that everyone achieves optimal health. CHIP's mission is to assess and address San Diego County's priority health needs through collaboration. To learn more about CHIP, please visit www.sdchip.org.

San Diego County Childhood Obesity Initiative - COI

Facilitated by CHIP, the San Diego County Childhood Obesity Initiative (COI) was formed as a public/private partnership to engage community partners to reduce and prevent childhood obesity. Its infrastructure includes workgroups in the seven domains with the greatest influence on childhood obesity (i.e., government, healthcare, schools & after schools, early childhood, community, media and, business). To learn more about the COI please visit, www.ourcommunityourkids.org.

San Diego County Farm to School Taskforce- F2S Taskforce

The San Diego County Farm to School Taskforce (F2S Taskforce) is a subcommittee of the COI's Schools and After-School domain. The vision of the F2S Taskforce is that San Diego County schoolchildren enjoy healthy foods that maximize seasonal and local products that bolster student achievement and wellness. Its mission is to be a collaborative effort to increase consumption of local, healthful, seasonal foods and to improve food literacy within schools. In 2014, the F2S Taskforce had over 20 active members including school district nutrition directors, distributors, growers, and community partners.

USDA Farm-to-School Grant Program

The United States Department of Agriculture (USDA) supports the development of farm-to-school activities across the United States through its USDA Farm-to-School Grants Program. The program's goal is to assist eligible entities in implementing farm to school programs that improve access to local foods in eligible schools. On an annual basis, USDA awards up to \$5 million in competitive grants for training, supporting operations, planning, purchasing equipment, developing school gardens, developing partnerships, and implementing farm to school programs. In 2015, CHIP received a USDA Farm-to-School Support Services grant program, which supports its work with the San Diego County Farm-to-School Taskforce. As part of this grant, CHIP has support to assist two districts in the development of a 3-year farm to school plan that includes both local/regional foods procurement and classroom education.



DESCRIPTION OF AVAILABLE TA, ELIGIBILITY, AND SELECTION CRITERIA

CHIP is requesting applications from school districts located in San Diego County that are seeking technical assistance (TA) in the development of a 3-year farm to school plan. The type and amount of TA provided will depend on district needs as well as CHIP staff's time and capacity. See the following page for examples of the types of TA available and estimated time commitment. Two (2) applicants meeting the criteria below will be chosen.

Eligibility

To be eligible the applicant must have the support of the district food service director as well as a school administrator (i.e. Superintendent, cabinet member, etc.) as evidenced by their signatures on the final application. A project lead must also be appointed to oversee the development of the plan, which may (but is not required to) be the district food service director. The applicant and all signing parties must also commit to implementing *at least* the first year of the 3-year plan once developed. The applying district must also meet the following participation requirements:

- Participate in the F2S Taskforce's 2015-2016 Harvest of the Month (HOTM) program, including general marketing and cafeteria menu alignment.
- Commit to engage distributor in conversations about the development and implementation of a 3-year farm to school plan, where applicable.
- Attend a minimum of three F2S Taskforce meetings in 2015; provide project report out at meetings that take place during the 3-year plan development process.
- Commit to participate in the 2015 *Let's Go Local!* Produce Showcase.

Selection Criteria

- Must meet all eligibility criteria and be willing to agree to all participation requirements.
- Preference given to active F2S Taskforce members (e.g., high meeting attendance, etc.).
- Districts whose size and/or capacity suggest the possibility of replicable F2S strategies.
- Preference given to districts with written school administrator and/or distributor support.
- Strong district commitment to and/or interest in farm-to-school.
- Demonstrated commitment to working with other districts to share best practices.
- Schools that have not recently received TA from the International Rescue Committee's (IRC's) Farm-to-Institution cohort will be prioritized.

SUBMISSION OF PROPOSALS

Please submit one copy of your proposal including the attached application with all the required signatures, complete responses to all questions, and any supporting documentation **by 5:00 p.m. on Wednesday, April 22, 2015 to:**

Colin Cureton, Food Systems Director
Community Health Improvement Partners
ccureton@sdchip.org

Questions may also be directed to Colin Cureton at the above email
or by phone at (858) 609-7962.



COMMUNITY HEALTH
IMPROVEMENT PARTNERS
making a difference together

Frequently Asked Questions (FAQ)

Q: What kinds of technical assistance are you offering?

The types of technical assistance that could be provided by CHIP's food system staff in the development of a 3-year farm-to-school plan include but are not limited to:

- Assistance developing a definition of what constitutes "local" or "regional" food for your district.
- Building support for farm-to-school into your district's produce bid, contract language, and procurement practices.
- Ensuring alignment between your local/regional procurement and F2S educational programming.
- Facilitating conversations within your district between parties critical to F2S success (i.e. food service staff, administrators, teachers, parents, students, etc.), or facilitate conversations between the district and other key F2S partners such as produce distributors, local farmers, other districts, etc.
- Coordinating and or deliver relevant trainings for staff involved in F2S activities.
- Supporting implementation of programs such as Harvest of the Month and CA Thursdays.
- Developing tracking and evaluation systems that will demonstrate the impact of your F2S activities.
- Implementing existing tools and strategies (i.e. resources from the Smarter Lunchrooms Movement, USDA, etc.) to ensure your students make the healthy choice.

The type and amount of TA provided will depend on district needs as well as CHIP staff's time and capacity.

Q: How much time will this require?

Again, the time requirement will depend on district needs as well as CHIP staff's availability and capacity. We foresee at least 1-2 in-person sessions during the first month of plan development, followed by intermittent (i.e. once every two months) in-person meetings until December, 2015. CHIP staff will also be able to provide remote assistance throughout the process. Finally, it is assumed that the recipient districts and its involved staff (i.e. project lead, district food service director, etc.) will plan for and allocate as much independent time as is deemed necessary to effectively develop the 3-year F2S plan.

Q: Will you (CHIP) conduct an assessment following the delivery of technical assistance?

Following the development of a 3-year farm-to-school plan there will be a short survey for the TA recipient regarding the effectiveness of the TA delivered and how to improve the process in the future. Each year there will be a check-in on progress of the 3-year plan's implementation to identify successes, barriers, possible solutions, etc.

Q: Can our district involve/collaborate with other districts during the plan development process?

Yes. If recipients feel comfortable or that it would be beneficial to do so, they may invite other San Diego County school districts to "shadow," participate, or collaborate in the development of their 3-year plan.

Q: How is this different from the opportunity through the IRC?

A similar opportunity was available in early 2014 through the International Rescue Committee (IRC) to receive technical assistance as part of a farm-to-institution cohort. The main differences are that this opportunity is only open to San Diego county school districts (the IRC group included hospitals as well) and will be formatted as 1-on-1 technical assistance (as opposed to a cohort format).



Farm-to-School (F2S) Technical Assistance Application: Developing a 3-Year F2S Plan

Please complete the application and return to Colin Cureton, CHIP Food Systems Director, by email at ccureton@sdchip.org, fax to 858-609-7998, or mail to: Community Health Improvement Partners (CHIP), Attn: Colin Cureton, 5095 Murphy Canyon Rd. Suite 105, San Diego, CA 92123.

Applications are due by Wednesday, April 22, 2015 at 5:00pm.

District Information

Name of District: Vista Unified School District

District Enrollment: 23,000

School District Contact: Amy Haessly

2015-2016 NSLP (Lunch Program) Enrollment: projected 13,000 lunch meals/day

2015-2016 SBP (Breakfast Program) Enrollment: projected 7,000 breakfast meals/day

Proposed Project Lead:

Name: Amy Haessly, RD

Title: Nutrition Education & Training Supervisor

Phone Number: 760-726-2170 x92404

Email Address: amyhaessly@vistausd.org

Participation Requirements

Please check the boxes below where applicable (Note: ALL boxes must be checked to be considered an eligible applicant):

- ☒ A school administrator (e.g., Superintendent, Cabinet Member) supports this project.
- ☒ The district food service director supports this project, as evidenced by their signature on the final application.
- ☒ A project lead from your district has been identified to oversee the development of the plan (Note: Food service staff must approve the final plan but are not required to lead the process for their district).
- ☒ We can commit to implementing at least the first year of the 3-year plan.
- ☒ Our district participates in the F2S Taskforce's 2015-2016 HOTM program, including general marketing and cafeteria menu alignment.
- ☒ With CHIP's support, we can commit to engage our distributor(s) in conversations about the development and implementation of a 3-year farm to school plan, where applicable.
- ☒ We will attend a minimum of three F2S Taskforce meetings in 2015 and can provide project updates/report-outs at meetings that take place during the 3-year plan development process.
- ☒ We commit to participate in the 2015 *Let's Go Local!* Produce Showcase on Friday, Oct. 23, 2015.
- ☒ We can commit to completing an annual survey to assess outcomes resulting from the TA provided.



Please answer the following questions to the best of your ability. Answers may be typed-in, hand-written, or attached in a separate document.

Open Ended Questions

- 1) Please briefly describe the extent of your current farm to school programming?

Vista Unified School District currently implements a farm to school program in the following ways: 1) we have a contract with Solutions Farms of Vista to purchase organic lettuce for our meal programs. Solutions Farms grows, harvests, and delivers approximately 700 pounds of lettuce to our school sites each week. 2) We work with Food 4 Thought to purchase farm-fresh, seasonal fruits from small farms throughout the CA Central Valley. Food 4 Thought provides information about the crops, farms, and farmers that we share with our audiences as well as conducts 4-5 farmer's markets with our elementary schools each year providing a highly engaging nutrition education event for our students and staff. 3) We work with our current produce distributor, American Produce, to identify local, regional, or California-grown crops we can procure for our Harvest of the Month in the Classroom program which currently involves over 150 classrooms.

- 2) What do you hope your farm to school programming will look like in five years?

In 5 years, I expect our farm to school programming will be woven into our district & departmental policies and procedures to ensure the farm to school concepts and principals are sustainable. I expect farm to school will always be considered during menu planning and procurement planning. I expect our students will be involved with growing some of the foods served in our cafes. I expect our students and staff to have an increase in their food literacy so they are interested in and knowledgeable about the source of their foods. I expect our program to be implementing California Thursdays. I expect to include local ingredients in our breakfast, lunch, supper, and summer feeding program meals. I expect to have a strong Harvest of the Month in the Classroom program in which teachers are helping educate our students about the source of their foods which will ultimately increase students' consumption of these foods and participation in our meal programs. I expect to have a way to measure our farm to school involvement. And true to our district's vision, I expect our farm to school program to serve as a model of educational excellence and innovation that we can share with other districts.

- 3) How do you think CHIP could best support and/or guide the development of your three year F2S plan?

I have extremely high hopes about our farm to school program over the next 3-5 years and CHIP's support and guidance is crucial to help us formulate our plan and begin implementation. I believe CHIP will help us map out a deliberate and realistic plan to meet our goals including developing our definition of "local" and "regional"; helping us develop sustainable procurement practices; supporting our implementation of our Harvest of the Month, CA Thursdays, and Smarter Lunchroom practices; and finally to help us develop tracking and evaluation systems to allow us to demonstrate the impact of our farm to school activities. I also strongly believe in sharing best practices and CHIP will help us facilitate ways to share our successes with others working toward similar goals.



COMMUNITY HEALTH
IMPROVEMENT PARTNERS
making a difference together

4) Why are you the best fit for this technical assistance opportunity?

Vista Unified School District is the best fit for this technical assistance opportunity because it aligns perfectly with our district's vision to "be the model of educational excellence and innovation". Our district administrators highly value the development of programs that help our students succeed. For example, over the last two years we've implemented the Harvest of the Month in the Classroom program with support from our Curriculum & Instruction Department and assistance from UCSD Center for Community Health. With their support, we developed our current program which has grown to over 150 teachers voluntarily and eagerly delivering nutrition education in their classrooms.

In my experience, having the support of an outside organization helps keep projects moving forward and helps create new partnerships between entities within the district. The outside organization can bring a new perspective which can help reluctant partners find their valued position in new programs. We're the best fit because we truly want CHIP's support and highly value your expertise!

5) What challenges do you foresee in implementing your 3-year F2S plan?

We recently put a produce bid out that unfortunately did not include any farm to school language. I do not know which produce distributor we will be using next school year. If they are unfamiliar with farm to school, this may be a challenge (but also a great learning opportunity for the distributor to learn with us together!).

Farm to School Taskforce Meeting attendance has been a challenge for me in the past but I plan to place all meeting dates on my calendar for the entire year to ensure my participation. I will also recruit a back-up staff person to attend in the event of my absence.

Signatures (please note that signatures are required from the proposed project lead, district food service director, and a school administrator):

Application Prepared By:

Name: Amy Haessly

Title: Nutrition Education & Training Supervisor

Signature: 

Date: 4/21/15

Food Service Director (if different than above)

Name: Brock Smith

Title: Child Nutrition Services Director


Signature: 

Date: 4/21/15

School Administrator (Superintendent, Cabinet Member, etc.)

Name: Donna Caperton

Title: Assistant Superintendent Business Services

Signature: 

Date: 4/21/15



COMMUNITY HEALTH
IMPROVEMENT PARTNERS
making a difference together

Acknowledgement of USDA Support

This project has been funded at least in part with Federal funds from the U.S. Department of Agriculture. The contents of this publication do not necessarily reflect the view or policies of the U.S. Department of Agriculture, nor does mention of trade names, commercial products, or organizations imply endorsement by the U.S. Government.

Nondiscrimination Statement

In accordance with Federal law and U.S. Department of Agriculture policy, this institution is prohibited from discriminating on the basis of race, color national origin, sex, age, or disability.

To file a complaint of discrimination, write USDA, Director, Office of Civil Rights; Room, 326-W, Whitten Building, 1400 Independence Avenue, SW, Washington, DC 20250-9410 or call (202) 720-5964 (voice and TDD). USDA is an equal opportunity provider and employer.



COMMUNITY HEALTH
IMPROVEMENT PARTNERS
making a difference together

Farm to School Visioning Session with VUSD

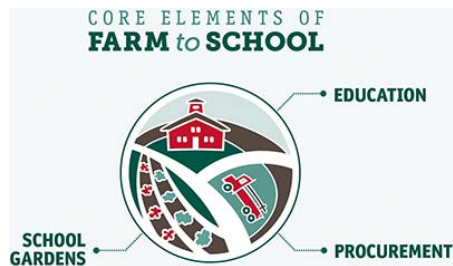
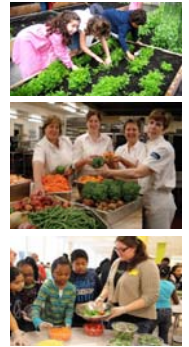
Colin Cureton
Food Systems Director, CHIP
July 22, 2015



WHAT is Farm to School?

Farm to school implementation differs by location but always includes one or more of the following:

- **School gardens:** Students engage in hands-on learning through gardening.
- **Procurement:** Local foods are purchased, promoted and served in the cafeteria or as a snack or taste-test.
- **Education:** Students participate in education activities related to agriculture, food, health and nutrition.



WHY Farm to School?

- Students participating in school meal programs receive ¼-½ of total calorie intake at school.

Impact

- ↑ Healthy choices
- ↑ F&V consumption
- ↑ Academic achievement
- ↑ Physical activity
- ↑ Willingness to try new foods
- ↑ Knowledge and awareness
- ↑ School meal participation (=increased revenue!)

Source: National Farm to School Network, <http://www.farmtoschool.org/Resources/BenefitsFactSheet.pdf>



Context: Who is CHIP?



Mission

To advance long-term solutions to priority health needs through collaboration and community engagement.

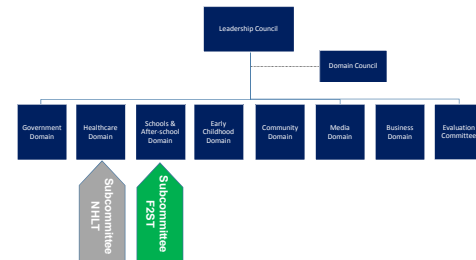
Programs



Context: San Diego County Childhood Obesity Initiative



Mission: A public-private partnership with the mission of reducing and preventing childhood obesity through policy, systems, and environmental change.



Context: San Diego County Farm to School Taskforce



Vision: San Diego County schoolchildren enjoy healthy foods that maximize seasonal and local products that bolster student achievement and wellness.

Mission: The San Diego County Farm to School Taskforce is a collaborative effort to increase consumption of local, healthful, seasonal foods and to improve food literacy within schools.

Membership (2014): 22 school districts, farmers, chefs, food distributors, numerous community partners.

Activities & Accomplishments

- Bi-monthly convenings
- Develop common definition of "local"
- Grower workshop (April, 2013)
- Two annual Lets Go Local! Produce Showcases
- USDA procurement training (April, 2015)
- Two SD County Farm to School Reports
- Two years of F2S profiles for SDC districts
- Annual seasonality chart
- Procurement assistance re: HOTM
- Brokering relationship between growers, distributors, and schools
- Market research/projecting institutional demand for local food
- Direct 1-on-1 TA with schools re: F2S
- Develop Garden-to-Café model with SDUSD

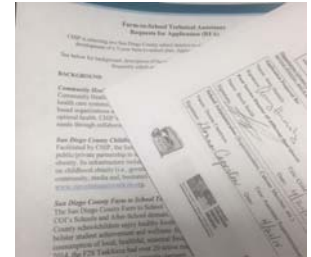
Context: RFA Process

- In early May, CHIP released a Request for Applications (RFA) to SDC school districts seeking TA in farm-to-school planning.

- 5 proposals were received.

- VUSD was selected as one of two TA-recipient schools.

- Prior to today:
 - Meet with Amy Haessly
 - Document existing F2S activities
 - Identify F2S team (you!)
 - Conduct F2S team outreach



Goals for Today: VUSD's Farm-to School Vision

Leading best practices (USDA, etc.) strongly recommend districts take a collaborative, team-based approach to farm to school.

Goals for Today

- Meet one another within the context of farm to school.
- Learn more about farm to school and its positive impacts.
- Give input to shaping the vision for Vista's farm to school program.
- Identify challenges to advancing farm to school activities within VUSD.
- Identify ways you can individually contribute to F2S success.

Questions?

Colin Cureton, M.S., M.P.P.
Food Systems Director, CHIP
858-609-7962
ccureton@sdchip.org

What is a "Vision Statement?"

"Mission" vs. "Vision:"

- **MISSION** is what you actually do.
- **VISION** is the end result.

For example....

Mission: The San Diego County Farm to School Taskforce is a collaborative effort to increase consumption of local, healthful, seasonal foods and to improve food literacy within schools.

Vision: San Diego County schoolchildren enjoy healthy foods that maximize seasonal and local products that bolster student achievement and wellness.

How can you help Vista's Farm to School program?

Name: _____

Role: _____

Please list the items you feel comfortable committing to:

1) _____

2) _____

3) _____

4) _____

5) _____

Do you have any thoughts or feedback from today's visioning session?

How can you help Vista's Farm to School program?

Name: _____

Role: _____

Please list the items you feel comfortable committing to:

1) _____

2) _____

3) _____

4) _____

5) _____

Do you have any thoughts or feedback from today's visioning session?